

Doc. No: D21/70872

IMPORTANT INFORMATION FOR THE COMMUNITY:

SHARED ZONE TRIAL ALBERT STREET AND VICTORIA STREET, BRUNSWICK EAST

Ισχύει νέο όριο ταχύτητας 20χλμ/ω, όλα τα οχήματα πρέπει να δίνουν προτεραιότητα στους πεζούς και θα μειωθεί ορισμένη στάθμευση σε περιοχές που εμφανίζονται στο χάρτη. Για περισσότερες πληροφορίες καλέστε το 9280 1912.

Il nuovo limite di velocità di 20km orari è ora in vigore; tutti i veicoli devono dare la precedenza ai pedoni e alcuni parcheggi verranno ridotti nelle aree indicate nella mappa. Per ulteriori informazioni, chiamare 9280 1911.

实行新的 20 公里时速限制，所有机动车必须给行人让道，并将减少地图所示区域的停车位。如需了解更多信息，请致电 9280 0750。

Áp dụng mức giới hạn tốc độ mới 20km/giờ, tất cả các xe cộ phải nhường đường cho người đi bộ và giảm bớt một số chỗ đậu xe tại các khu vực hiển thị trên bản đồ. Muốn biết thêm thông tin, hãy gọi số 9280 1915.

يتم تطبيق حد السرعة الجديد 20 كم / ساعة، ويجب أن تفسح جميع المركبات الطريق للمشاة وأن يتم تخفيض بعض مواقف السيارات في المناطق الموضحة في الخريطة. ولمزيد من المعلومات، اتصل على الرقم 9280 1913

What we are doing

We're working on ways to make it easier for our Moreland community to get around local neighbourhoods by walking and cycling in the covid-environment. One of these ways is trialling shared zones on **Albert Street** and **Victoria Street, Brunswick East**, alongside Fleming Park.

A shared zone is an area that all road users can use. Vehicles and cyclists must give way to pedestrians in a shared zone. These shared zones will be short 100 metre stretches on Albert Street and Victoria Street with small extensions into Elesbury Avenue, John Street and Hutchinson Street.

The shared zones will have speed humps to slow down traffic and pavement markings to distinguish them from the regular road. We're also including public art to create a colourful streetscape for locals to enjoy.

These projects are trials, using materials that can be modified or removed depending on community feedback.



Project design: The bouncing balls pavement pattern has been created by local artist Carla Gottgens, inspired by various sports played throughout the history of Fleming Park.

Why we are doing this

The covid-19 pandemic is impacting the way we travel and move around. In July 2020, Council approved some trial projects to help the community to move around safely by walking and cycling during the pandemic. Council's 2020/21 budget includes \$1.68 million to deliver these projects.

Public transport is running at reduced capacity due to social distancing requirements. We want to provide more space for social distancing for pedestrians, support safe movement and improved access to local activity centres and promote physical and mental health.

Shared zones will encourage walking along Victoria Street and Albert Street, improve access to the park and reduce traffic on residential streets, making the area safer to move through but still allowing vehicle access.

What changes will occur on this street?

The new speed limit for vehicles (including cyclists) within this shared zone is 20km/h. Vehicles and cyclists must give way to pedestrians. Speed limits and road conditions are not changed outside this small area. Both Albert Street and Victoria Street will remain two-way streets with full access for all vehicles.

Will there be any impacts to parking?

There will be some minor impacts on parking. Six parking spaces will be removed on **Victoria Street**, 2 on **John Street**, and 8 on **Albert Street** (2 of these are already No Stopping zones between 7am-5pm Mon-Fri).

When will construction start and finish?

Construction will happen between March and May 2021. There will be small disruptions for 2 to 3 days, including temporary road closures on Victoria and Albert Streets with detours in place while the project is installed. We will let you know before these works start.

Tell us what you think

We are inviting you to tell us about your experiences of traveling in Moreland using our shared zones at conversations.moreland.vic.gov.au/transport-projects.

The 2-year shared zone trial period will conclude in 2023. Your feedback will help us to monitor the trials and make changes or improvements before any permanent decisions are made.


Find out more

For more information on what we are doing to support safe movement by walking and cycling, visit our website at moreland.vic.gov.au/covidtransport or call us on **9240 1111**.

If you have any questions, concerns or would like to provide any feedback, you can also email us on covidtransport@moreland.vic.gov.au.

Want to talk to us?



 SCAN ME



Visit our website:

www.moreland.vic.gov.au/covidtransport



Email

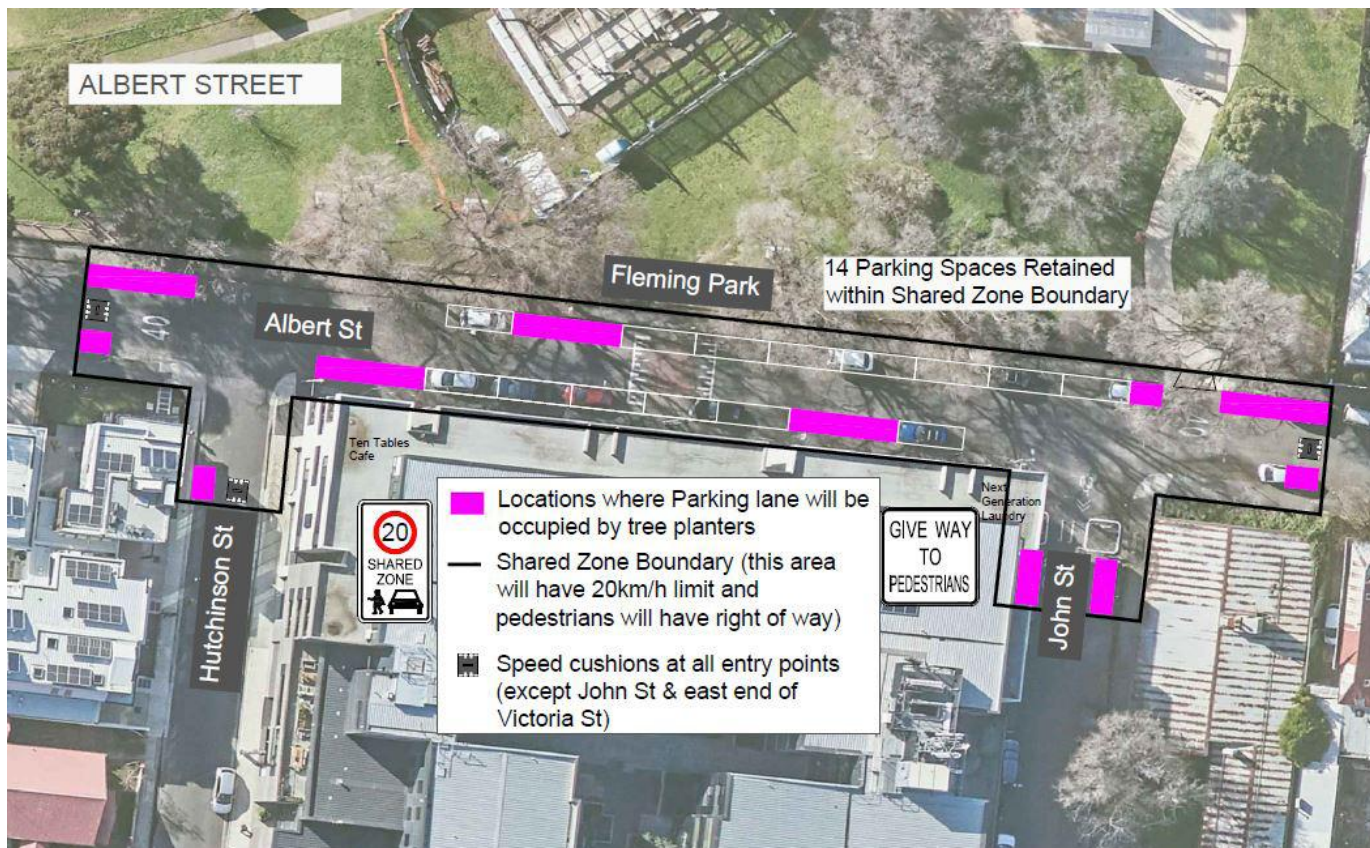
covidtransport@moreland.vic.gov.au



Call us

9240 1111

Location of shared zones in Albert Street and Victoria Street, Brunswick East



Moreland Language Link

廣東話 9280 1910
 Italiano 9280 1911
 Ελληνικά 9280 1912

عربي 9280 1913
 Türkçe 9280 1914
 Tiếng Việt 9280 1915

हिंदी 9280 1918
 普通话 9280 0750
 ਪੰਜਾਬੀ 9280 0751

All other languages
 9280 1919