



24 June 2020

Dear Resident or Business Owner

Clyde Road – Works in your area this July

The Victorian Government is removing 17 dangerous level crossings, including the one at Clyde Road as part of a \$16 billion investment to upgrade the Pakenham line that will improve safety, reduce congestion and allow more trains to run more often.

Works are underway to remove the Clyde Road level crossing and build a road underpass. The Berwick Station bus interchange will also be upgraded.

To prepare for major construction later this year, works continue throughout July, including:

- geotechnical and service investigations along Clyde Road, surrounding local streets and at Berwick Station car park
- site clearing and minor earthworks near the level crossing
- realigning the footpath and pedestrian rail crossing on the western side of Clyde Road and closing the eastern pedestrian rail crossing and footpath, to create a safe work zone.

What to expect

- Construction works, vehicles and equipment on site
- Temporary lane closures and reduced speed limits along Clyde Road
- Traffic management to help drivers and pedestrians move safely through the area
- No changes to business and property access
- Noise levels will be monitored and minimised as much as possible.

Works will generally take place **Monday to Friday 7am to 6pm, and Saturdays 7am to 1pm** subject to weather conditions.

Night works will take place within the rail corridor on **Friday 17 July to Monday 20 July from 11pm to 4am**.

Changes to how you travel

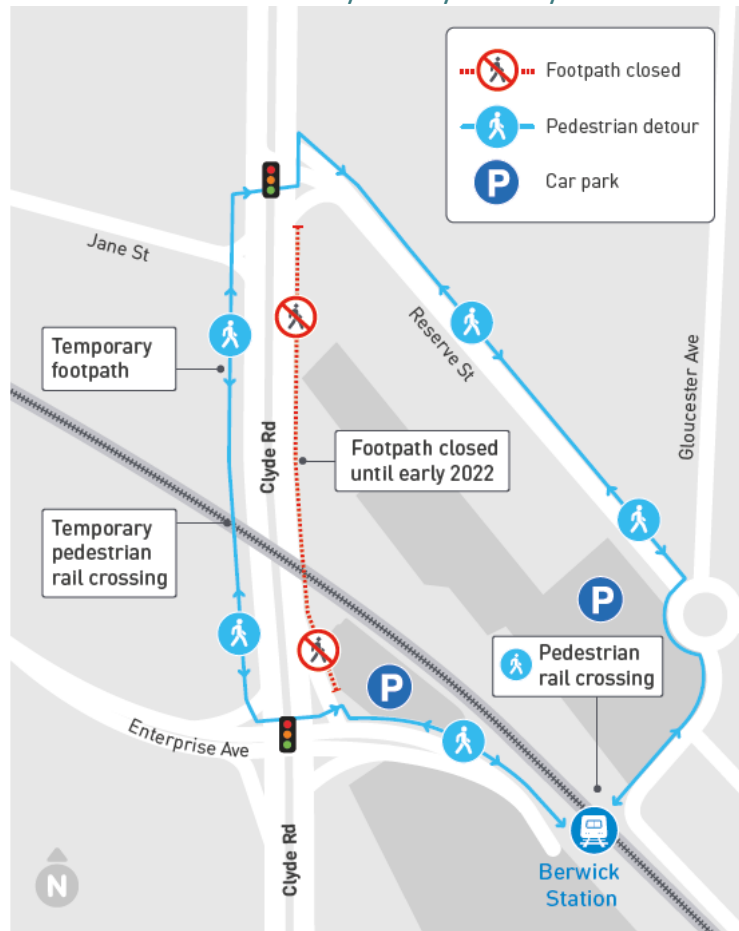
Friday 17 July to Monday 20 July

- Pedestrian access across the rail line on both sides of Clyde Road will be closed from **11pm Friday 17 July to 4am Monday 20 July**. You can detour at Berwick Station and Reserve Street.
- Buses replace trains on the Pakenham line between Dandenong and Pakenham from **12am Saturday 18 July to last service on Sunday 19 July**. Plan ahead at ptv.vic.gov.au

Monday 20 July to early 2022

- The footpath and pedestrian rail crossing on the eastern side of Clyde Road, between Reserve Street and the Enterprise Avenue intersection, remains closed. You can detour along the western side of Clyde Road – see map overleaf.

Pedestrian detour Monday 20 July to early 2022



Health and safety

The health and safety of our workers and the community is our key priority as we continue to deliver the Clyde Road Level Crossing Removal Project.

To find out more about the measures in place on our projects, visit our website.

For information about coronavirus, visit coronavirus.vic.gov.au

More information

If you have any questions or would like more information about the project, call us on 1800 105 105 or email contact@levelcrossings.vic.gov.au 24 hours a day.

Sign up for regular project updates at levelcrossings.vic.gov.au/subscribe

Kind regards

Clyde Road Level Crossing Removal Project

CONTACT US

levelcrossings.vic.gov.au
contact@levelcrossings.vic.gov.au
1800 105 105

Level Crossing Removal Project,
GPO Box 4509, Melbourne VIC 3001

     @levelcrossings



Translation service – For languages other than English, please call 9280 0780

Please contact us if you would like this information in an accessible format.

If you need assistance because of a hearing or speech impairment, please visit relayservice.gov.au

**VICTORIA'S
BIG BUILD**



Authorised and published by the Victorian Government, 1 Treasury Place, Melbourne