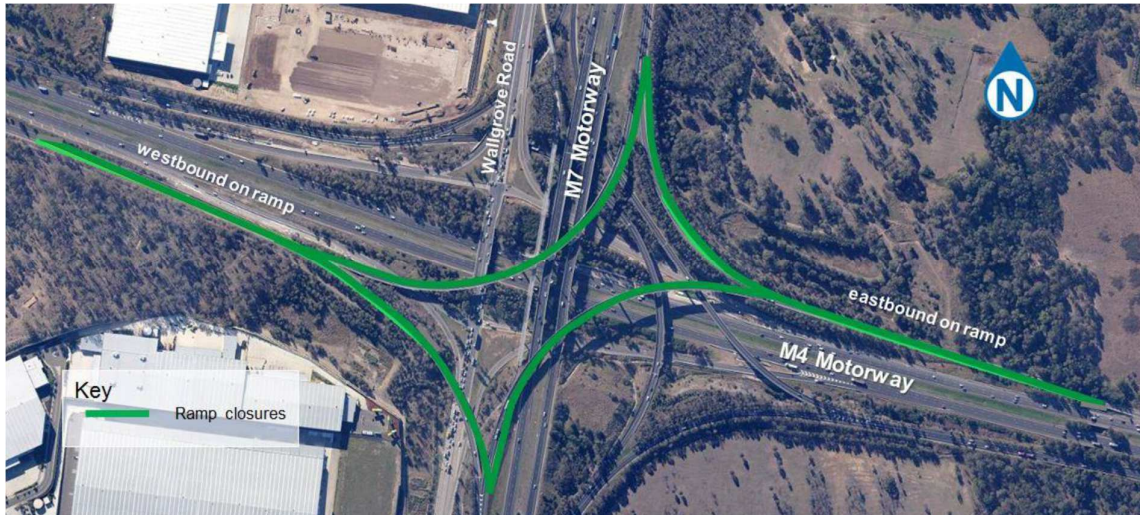


# M4 Smart Motorway

## M7 to M4 on ramps at Eastern Creek

Transport for NSW | May 2020



The NSW Government is investing \$600 million to build the **M4 Smart Motorway**. The first of its kind in NSW, this project will introduce intelligent technology to the M4 Motorway between Pitt Street, Mays Hill and Mulgoa Road, Penrith.

When complete, the M4 Smart Motorway is expected to reduce average travel times, provide more reliable journeys and reduce crashes by up to 30 per cent.

Sections of the M4 Smart Motorway will begin to return to the original speed limit over the next few months. Where construction continues, temporary speed limits will remain in place. Please take note of the signage and drive within the speed limit.

### Ramps closed

Transport for NSW will continue work at the **M7 to M4 eastbound** and **westbound on ramps** at Eastern Creek.

All four ramps will close for up to **17 nights** between **Sunday 10 May** and **Saturday 30 May** from **9pm** to **5am** each night to install ITS (Intelligent Transport System) infrastructure and traffic lights to control traffic flow entering the M4 Motorway.



## Our work schedule

Both on ramps will close for up to **17 nights** between **Sunday 10 May** and **Friday 29 May** from **9pm** to **5am** each night, weather permitting.

Our night work hours are between **6pm** and **7am** from **Sunday** to **Friday**. Day work hours are between **7am** and **6pm Monday to Friday** and **8am** to **1pm Saturday**.

## Contact us

If you have any questions about the M4 Smart Motorway project, please contact our delivery partner Seymour Whyte on:

 1800 989 929

 [m4sm-stage2@seymourwhyte.com.au](mailto:m4sm-stage2@seymourwhyte.com.au)

 [rms.nsw.gov.au/m4smartmotorway](https://rms.nsw.gov.au/m4smartmotorway)

 PO Box 973, Parramatta NSW 2150

## Key closure dates

The work at these locations has been planned to minimise impact on the road network. The following work is scheduled to take place from **9pm** to **5am**:

- **Sunday 10 May**  
One night ramp closure
- **Tuesday 12 May to Saturday 16 May**  
Four night ramp closure
- **Sunday 17 May to Saturday 23 May**  
Six night ramp closure
- **Sunday 24 May to Saturday 30 May**  
Six night ramp closure

Work will be carried out adjacent to the **M7 shared path** between Wonderland Drive and the M7/M4 Interchange on **Sunday 10 May**, **Tuesday 12 May** and **Wednesday 13 May** between the hours of **9pm** and **5am**, weather permitting. Shared path users are encouraged to plan ahead and take care when travelling in the area.

## How will the work affect you?

Our work may be noisy at times, but we will do everything we can to minimise its impact, including:

- turning off machinery when not in use
- briefing workers to minimise noise
- using squawkers rather than beepers on reversing vehicles.

## Traffic changes and detours

There will be temporary traffic changes to ensure the work zone is safe for both road users and construction workers.

Advance-warning signs will be installed on approaches to the work areas. Detours will also be in place and may affect travel times.

Southbound traffic on the M7 can exit at the Great Western Highway and use Wallgrove Road to enter the M4. Northbound traffic on the M7 can exit at Wallgrove Road to enter the M4.

Please keep to speed limits and follow signs and traffic controller directions.

For the latest traffic updates, you can call 132 701, visit [livetraffic.com](http://livetraffic.com) or download the Live Traffic NSW App.

