

ACTIVE TRAVEL SURVEY (PART 1)

AIM

- To investigate the historical, social, and cultural aspects influencing the way people travel to school and how this differs on a generational level.

VELS: 3/4

GRADE: 3-6

- [The Humanities](#) - Level 3

As students work towards the achievement of Level 3 standards in the Humanities, they apply the concepts of time, continuity and change through a study of the history and traditions of Australians. Students investigate the human and physical characteristics of their local area and other parts of Victoria and consider features of their local community that have changed over time.

- [The Humanities; History](#) - Level 4

Learning in the History domain provides students with knowledge, skills and behaviors to understand themselves and their world, to apply their understanding in their present lives and consider futures they desire. The past gives students inspiration and alternatives for their own lives. It helps them understand how the world has changed in the past and how it might be changed again in the future. It assists students to distinguish between the ephemeral and what is of lasting worth.

DURATION (approximate)

- 30mins in class: [Active Travel Student Survey](#)
- 30mins at home: [Active Travel Parent Survey](#)
- 30mins at home: [Active Travel Grandparent Survey](#)
- 30mins: Follow-up discussion

LINK

- [Active Travel Survey \(PART 2\): Table & Graph](#)
- [Back to Contents Page](#)

ACTIVE TRAVEL SURVEY (PART 1)

LESSON NOTES

EQUIPMENT

1 per student:

- Active Travel Student Survey
- Active Travel Parent Survey
- Active Travel Grandparent Survey
- Map of the local Area & ruler (for Q2).
- Useful Links to maps:
 - Melways: www.street-directory.com.au
 - Map for all areas of Australia: www.whereis.com.au

INSTRUCTIONS

- Show students how to measure the approximate distance they travel to school, using a ruler and a local map with a scale (for Q2).
- Students complete the:
 - Active Travel Student Survey (in class)
 - Active Travel Parent Survey (at home)
 - Active Travel Grandparent Survey (at home)

(Students interview a parent and grandparent or choose people from their parents and grandparent's generations).

FOLLOW-UP DISCUSSION

- Discuss the similarities and differences that have become evident from completing the surveys for example:
 - Discuss changes in modes of travel/transport over time.
 - Why have people chosen particular ways to travel?
 - What distances did people of different generations actively travel to school?

- What were some positive aspects of active travel highlighted by the older generations? Do they make active travel seem more attractive for this generation?
- How might travel differ for future generations?
- Explore reasons why people may have felt different depending on their mode of travel in the morning.
- Parents and grandparents who went to primary school overseas may also provide interesting topics for discussion, such as ice-skating and skiing to school, or use of different cycling laws.
- Students select one of the short stories from their surveys to share with the class or with a small group of peers.

(These discussion topics could also be explored in more depth as research projects).


LINK: [Active Travel Survey Table & Graph - \(PART 2\)](#)

Aim: To compile Active Travel Survey data in a table and graph format to display the different modes of transport used by people from three generations.

ride2school.com.au



ACTIVE TRAVEL STUDENT SURVEY

1) Where is your school located? _____ 


2) How far from school do you live?  _____ km/m 

2) How do you usually travel to school? (Circle)



3) Why do you travel that way? _____

4) How long does it usually take you to travel to school? _____

5) Do you enjoy travelling to school this way? _____ 

6) Why or Why not? _____

7) How do you usually feel when you arrive at school in the morning? (Circle)

SLEEPY

WIDE AWAKE

GRUMPY

HAPPY

ENERGETIC

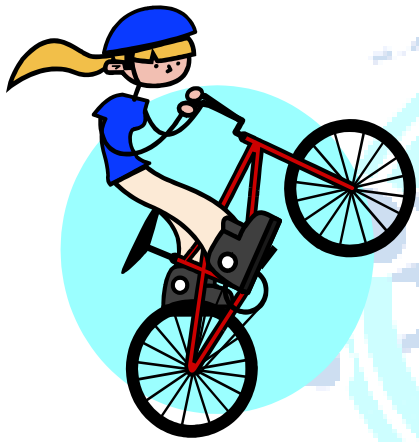


8) How often do you walk to school?  ____ Per: Week Month Year

9) How often do you ride to school?  ____ Per: Week Month Year

10) If you do not ride or walk to school regularly, what would help you to do this? _____

11) Do you have an interesting story from your experiences travelling to school?




ride2school.com.au

Draw a picture of yourself travelling to school (Optional)

ACTIVE TRAVEL PARENT SURVEY

Interview one of your parents to find out how they travelled to school. Ask the following questions.

1) Where was your primary school located? _____ 

2) How far did you live from your primary school? _____ km/m

3) How did you usually travel to primary school? (Circle)



4) Why did you travel to school this way? _____

5) How long did it usually take you to travel to school? _____

6) Did you enjoy travelling to school this way? _____ 

7) Why or Why not? _____

8) How did you usually feel when you arrived at school? (Circle)

SLEEPY

WIDE AWAKE


GRUMPY

HAPPY

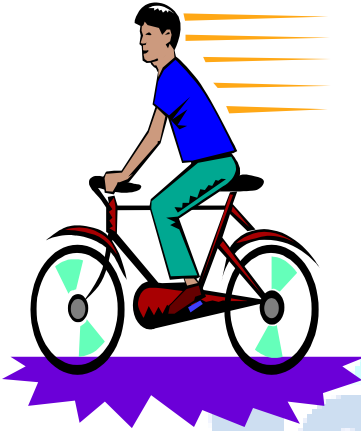
ENERGETIC



9) How often did you walk to school?  _____ Per: Week Month Year

10) How often did you ride to school?  _____ Per: Week Month Year

10) Do you have an interesting story from your experiences travelling to primary school?



STUDENT OBSERVATIONS

Is the way that you travel to school similar or different from the way your parent once travelled to primary school? (*Circle*)

DIFFERENT

SIMILAR

Please describe the similarities or differences:

ACTIVE TRAVEL GRANDPARENT SURVEY

Interview a grandparent (or somebody much older than your parents) to find out how they used to travel to school. Ask the following questions.

1) Where was your school located? _____



2) How far did you live from your primary school? _____ km/m

3) How did you usually travel to primary school? (Circle)



4) Why did you travel to school this way? _____

5) How long did it usually take you to travel to school? _____

6) Did you enjoy travelling to school this way? _____



7) Why or Why not? _____

8) How did you usually feel when you arrived at school? (Circle)

SLEEPY

WIDE AWAKE

GRUMPY

HAPPY

ENERGETIC



9) How often did you walk to school?  _____ Per: Week Month Year

10) How often did you ride to school?  _____ Per: Week Month Year

11) Do you have an interesting story from your experiences travelling to primary school?



STUDENT OBSERVATIONS

Is the way that you travel to school similar or different from the way that your grandparent once travelled to primary school? *(Circle)*

DIFFERENT

SIMILAR

Please describe the similarities or differences:
