



## **Annual Super Tuesday bike count, 2010: Tuesday 2 March, 7 – 9 am**

### **Initial data: City of Yarra**

*The data in the following table shows data collected in the annual Super Tuesday bike count. The table includes data received by the Bicycle Network as at 17 March 2010. 'Total rider numbers' indicates the total number of riders through each intersection in the 7 – 9am period. Turning movements will be provided in full in the final report.*

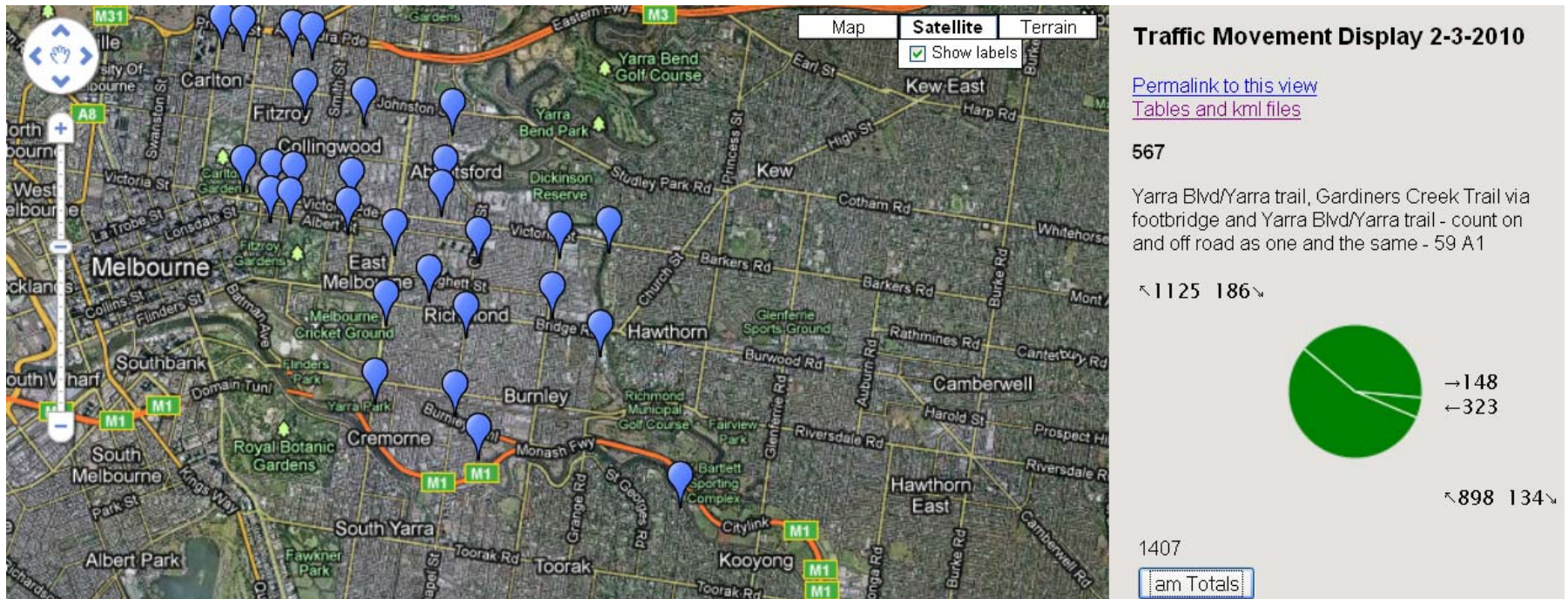
*The graphical images are screen captures that give an indication of the format of some of the data presentation in the final Super Tuesday reports that each council will receive.*

*Please note that the data provided here is raw data and the verification process is not yet complete and so there maybe a small % of sites for which data is not available.*

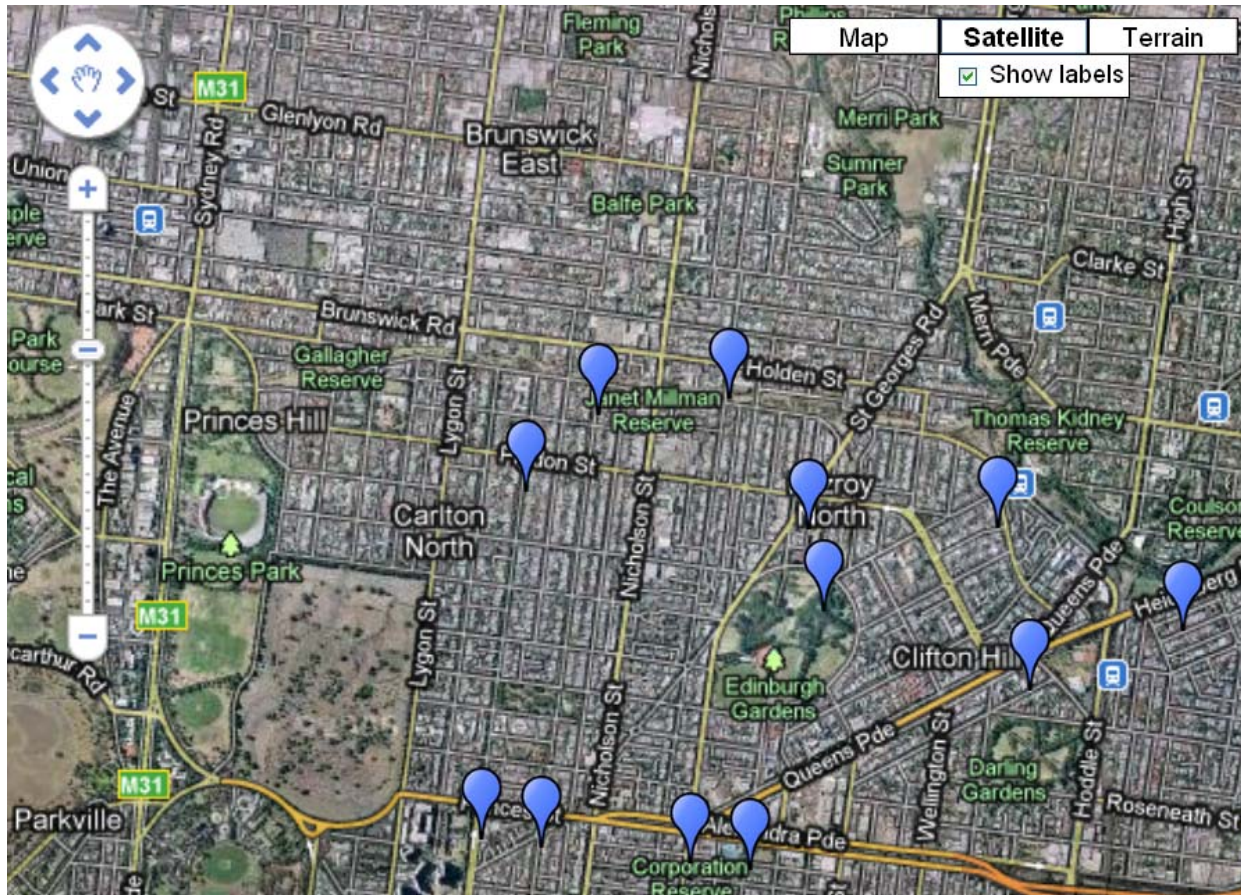
<b>Council</b>	<b>Location</b>	<b>Map ref</b>	<b>Site</b>	<b>Total Number of Riders</b>
Yarra	Yarra Blvd/Yarra trail, Gardiners Creek Trail via footbridge and Yarra Blvd/Yarra trail - count on and off road as one and the same	59 A1	567	1407
Yarra	Capital City Trail, Canning St and Capital City Trail	29 K11	521	1077
Yarra	Canning St, Princes St, Canning St and Princes St	43 K2	536	923
Yarra	Brunswick St, Gertrude St, Brunswick St and Gertrude St	44 A6	545	876
Yarra	****Brunswick St, Victoria Pde, Morrison Plc and Victoria Pde	44 A6	549	687
Yarra	Nicholson St, Gertrude St, Nicholson St and path/rd to Rathdowne St	43 K6	543	642
Yarra	Bridge Rd, Yarra Blv and Bridge Rd	44 J10	561	600
Yarra	Brunswick St, Queens Pde, Alexandra Pde, Brunswick St and Alexandra Pde	44 A2	537	598
Yarra	Napier St, Johnston St, Napier St and Johnston St	44 B4	539	585
Yarra	Wellington St, Johnston St, Wellington St and Johnston St	44 C4	540	582
Yarra	Napier St, Gertrude St, Napier St and Gertrude St	44 A6	546	547
Yarra	Wellington St and Langridge St, Wellington St and Langridge St	44 C6	547	521
Yarra	Napier St, Alexandra Pde, Napier St via path through park and Alexandra Pde	44 B3	538	501
Yarra	Path to Rushall Station, Rushall Cres, Falconer St and Rushall Cres	30 D12	525	474
Yarra	Nicholson St, Gipps St, Nicholson St and Gipps St	44 E6	544	445
Yarra	Queens Pde, Heidelberg Rd, Turnbull St and Queens Pde	44 D1	532	429
Yarra	Punt Rd, Swan St, Punt Rd and Swan St	44 C11	562	396
Yarra	St Georges Rd, Scotchmer St, St Georges Rd and Scotchmer St	30 B12	526	387
Yarra	Wellington St, Victoria Pde and Victoria Pde	44 C7	551	384
Yarra	Fergie St, path to Scotchmer St, Falconer St, Alfred Cres, path in park and Alfred Cres	30 B12	530	380
Yarra	Rathdowne St, Princes St, Rathdowne St and Princes St	43 J2	535	344
Yarra	Church St, Swan St, Church St and Swan St	44 E11	563	344
Yarra	Walmer St, Victoria Pde, Burnley St and Victoria Pde	44 H7	555	336
Yarra	Rae St, Holden St, Rae St and Holden St	30 B10	520	332
Yarra	Church St, Bridge Rd, Church St and Bridge Rd	44 F9	560	313
Yarra	Rathdowne St, Pigdon St, Rathdowne St and Pigdon St	29 K11	524	307

Yarra	Slip lane on south side of Heidelberg Rd	30 F12	531	285
Yarra	Johnston St, Nicholson St and Johnston St	44 E4	541	278
Yarra	Napier St, Victoria Pde and Victoria Pde	44 A6	550	277
Yarra	Nicholson St, Nicholson St and Langridge St	44 E6	548	259
Yarra	Paths to Heidelberg Rd, path up to Yarra Bend Rd (Capital City Trail/Yarra Trail) and path down to pipebridge	30 J12	529	255
Yarra	Hoddle St, Bridge Rd, Hoddle St and Bridge Rd	44 D9	559	249
Yarra	Lennox St, Highett St, Lennox St and Highett St	44 E8	557	243
Yarra	Hoddle St, Elizabeth St, Hoddle St and Albert St	44 D7	554	215
Yarra	Downstream path towards Barkers Rd bridge, path up to Barkers Rd and upstream path towards Walmer St footbridge	2H H2	553	208
Yarra	Burnley St, Crown St dogleg, Burnley St and Highett St	44 H9	558	196
Yarra	Mary St, Barkly Ave, Mary St and Barkly Ave	44 F12	565	168

## Site 567 – Rider numbers and movements



**Site 521 – Rider numbers and movements**

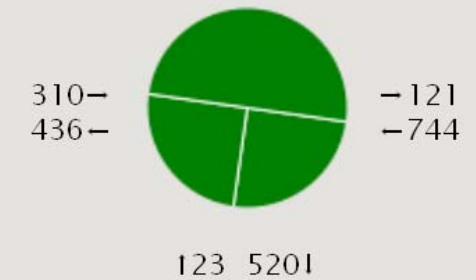


**Traffic Movement Display  
2-3-2010**

[Permalink to this view](#)  
[Tables and kml files](#)

521

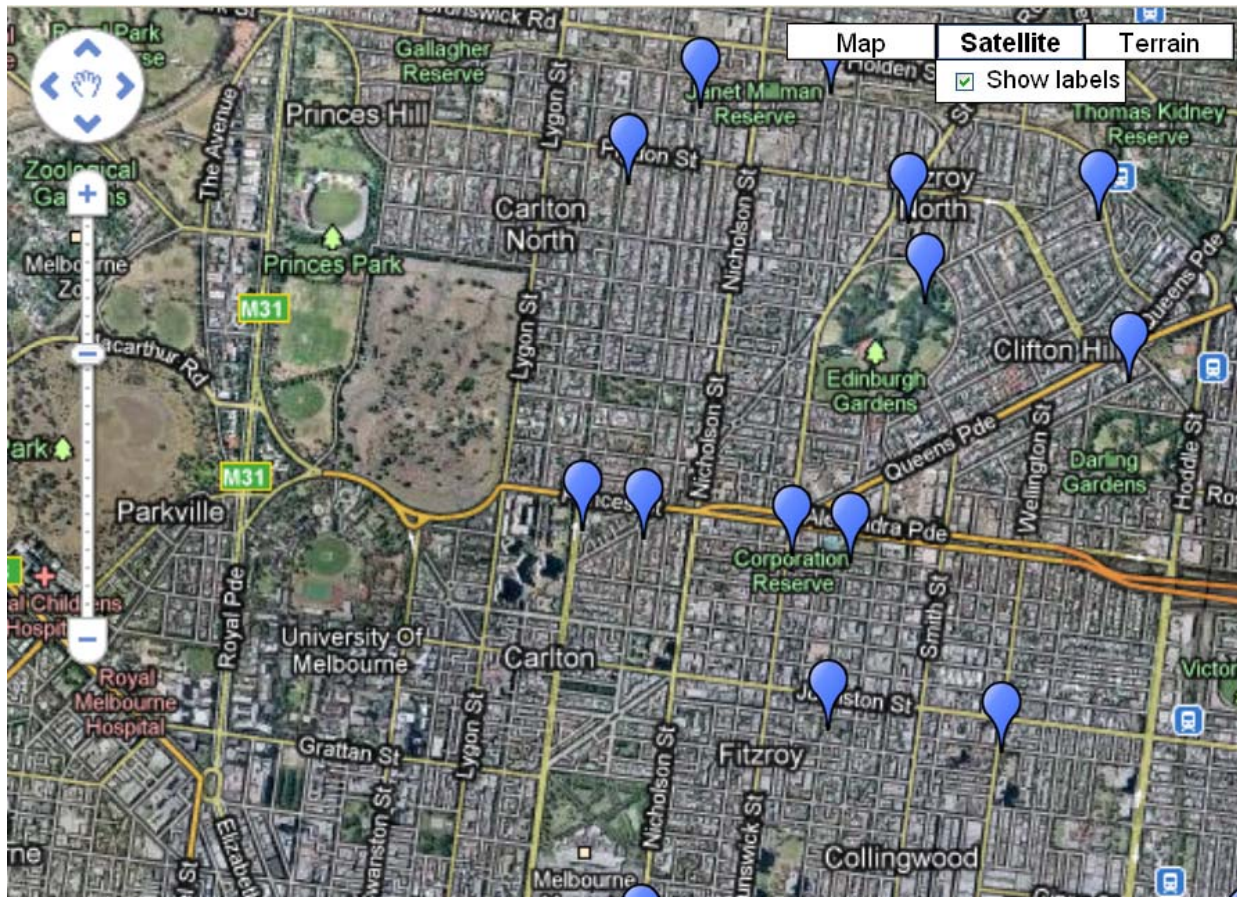
Capital City Trail, Canning St and  
Capital City Trail - 29 K11



1077

am Totals

**Site 536 – Rider numbers and movements**

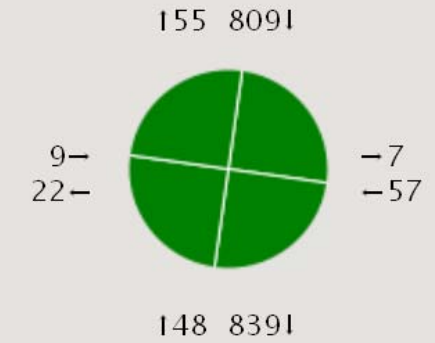


**Traffic Movement Display  
2-3-2010**

[Permalink to this view](#)  
[Tables and kml files](#)

536

Canning St, Princes St, Canning St  
and Princes St - 43 K2



923

am Totals