



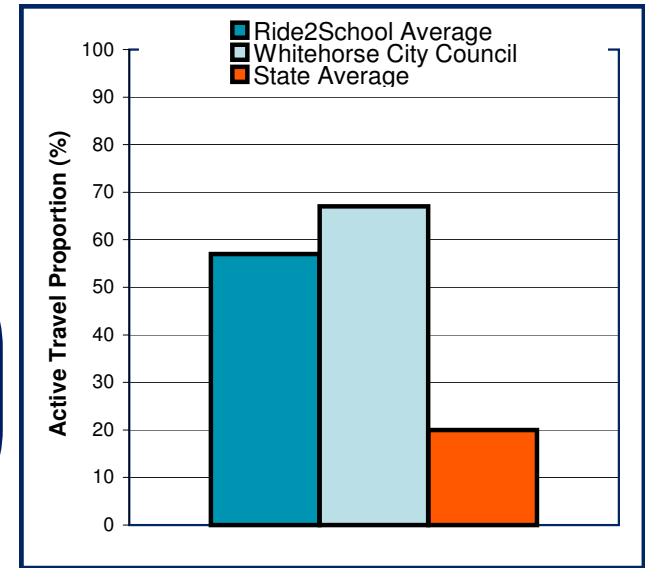
National Ride2School Day 2010 Report

Whitehorse City Council

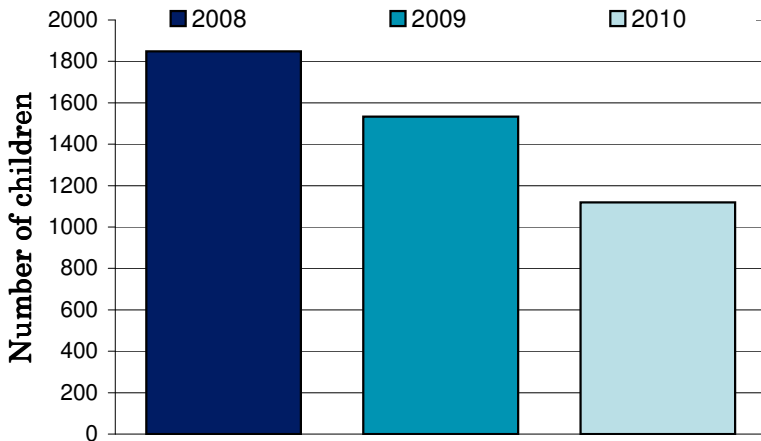
Dear Mayor, Councillors and supporters of Ride2School, Ride2School is proud to bring you all the figures on the 2010 National Ride2School Day in your municipality. This years National Ride2School Day was our biggest and best yet!

Any involvement your council may have had to support the day is much appreciated by all involved and gets more students riding more often!

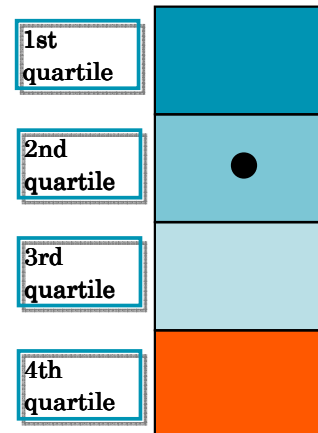
The graph on the right shows the Ride2School, your council's and the state-wide average active travel rate



Active travel numbers (based on Hands Up! data)



The black dot in the right diagram marks your relative position in comparison to other Victorian councils. Ideally, you want to be in the first quartile.



The registered school rank shows how many schools are registered in your council versus other councils. The active travel rank does the same, only for active travel percentage.

Registered school rank
16
(out of 80 councils)

Active travel rank
26
(out of 80 councils)

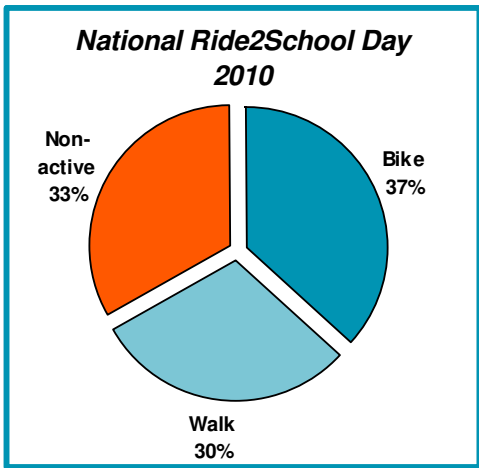
Whitehorse City Council

Schools currently registered with Ride2School	National Ride2School Day Active Travel %age		
	2008	2009	2010
St Benedict's Primary School			
Mont Albert Primary School.	50		
Kingswood College			
St Francis Xavier's Primary			
Koonung Secondary School		41	
Kerrimuir Primary School	51		
Box Hill North Primary School			67
Blackburn Lake Primary School	14		
Orchard Grove Primary School	73		
St Thomas The Apostle Primary School	78	66	
Blackburn Primary School			47
Old Orchard Primary School	80	68	76
Nunawading Primary School			
Mount Pleasant Rd Primary School		83	
Vermont Secondary College (Mitcham Vic)			
Rangeview Primary School			
St John's Mitcham			71
St James Primary School (Vermont Vic)	84	76	77
Vermont Primary School		49	
St Timothy's Primary School			
Vermont South Special Primary School			
Vermont Secondary College (Veromont South Vic)			
Blackburn English Language School			
Forest Hill College			



Carbon Savings
6.84
tonnes of greenhouse gas emissions

136809
black balloons



Ride2School
 Ph: 03 8636 8888
 E: ride2school@bv.com.au
 W: www.ride2school.com.au

Top 5 Local Councils
 (Based on the number of schools reporting)

1. Greater Geelong City Council
2. Mornington Peninsula Shire Council
3. Yarra Ranges Shire Council
4. Boroondara City Council
5. Wyndham City Council

Council Active Schools Challenge

The Active Schools Challenge is an opportunity for schools who are already kicking some active travel goals or are hoping to increase their active travel rate to be rewarded for their efforts.

We know that council support assists in increasing active travel rates, so we have set you a challenge! The council that has the most schools complete the challenge compared to the total number of schools in the municipality will be rewarded the 2010 Ride2School Most Active Council Award. For more information visit

<http://www.bv.com.au/ride2school/91212/>