



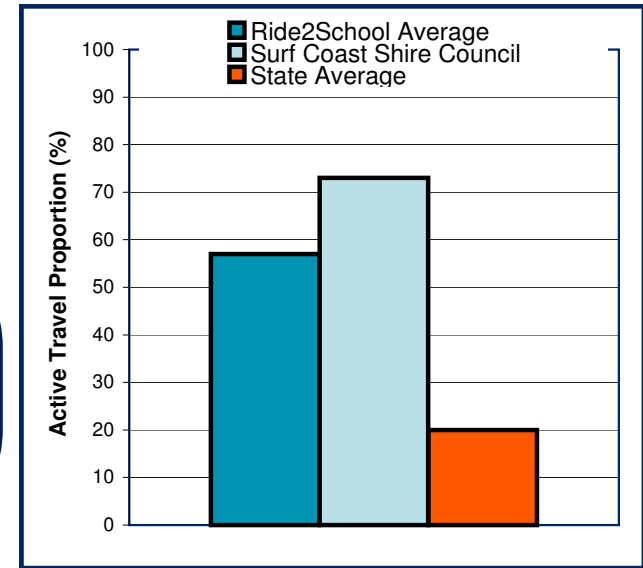
# National Ride2School Day 2010 Report

## Surf Coast Shire Council

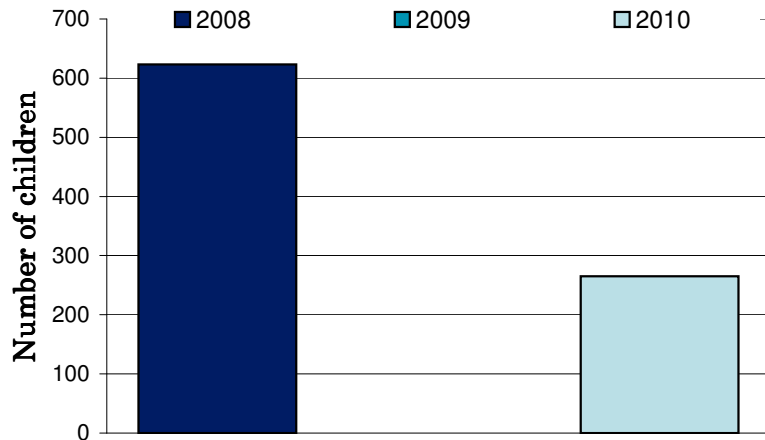
Dear Mayor, Councillors and supporters of Ride2School, Ride2School is proud to bring you all the figures on the 2010 National Ride2School Day in your municipality. This years National Ride2School Day was our biggest and best yet!

Any involvement your council may have had to support the day is much appreciated by all involved and gets more students riding more often!

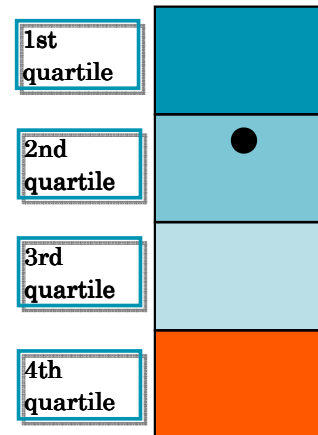
The graph on the right shows the Ride2School, your council's and the state-wide average active travel rate



**Active travel numbers (based on Hands Up! data)**



The black dot in the right diagram marks your relative position in comparison to other Victorian councils. Ideally, you want to be in the first quartile.



The registered school rank shows how many schools are registered in your council versus other councils. The active travel rank does the same, only for active travel percentage.

**Registered school rank**  
**44**  
**(out of 80 councils)**

**Active travel rank**  
**18**  
**(out of 80 councils)**

# Surf Coast Shire Council

Schools currently registered with Ride2School	National Ride2School Day Active Travel %age		
	2008	2009	2010
Torquay Primary School	57		
Bellbrae Primary School			
St Therese Primary (Torquay Vic)	66		73
Torquay College P-9			
Anglesea Primary School			
Aireys Primary School			
Lorne Campus P-12			
Deans Marsh Primary School			
Moriac Primary School			
Winchelsea Primary School			



**Carbon Savings**  
**1.22**  
**tonnes of greenhouse**  
**gas emissions**

**24422**  
**black balloons**

**Top 5 Local Councils**  
 (Based on the number of schools reporting)

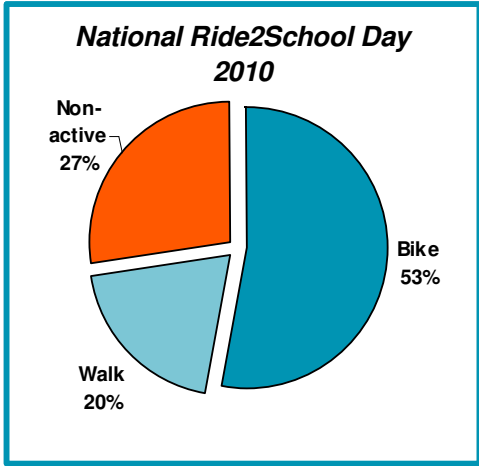
1. Greater Geelong City Council
2. Mornington Peninsula Shire Council
3. Yarra Ranges Shire Council
4. Boroondara City Council
5. Wyndham City Council

**Council Active Schools Challenge**

The Active Schools Challenge is an opportunity for schools who are already kicking some active travel goals or are hoping to increase their active travel rate to be rewarded for their efforts.

We know that council support assists in increasing active travel rates, so we have set you a challenge! The council that has the most schools complete the challenge compared to the total number of schools in the municipality will be rewarded the 2010 Ride2School Most Active Council Award. For more information visit

<http://www.bv.com.au/ride2school/91212/>



**Ride2School**  
 Ph: 03 8636 8888  
 E: [ride2school@bv.com.au](mailto:ride2school@bv.com.au)  
 W: [www.ride2school.com.au](http://www.ride2school.com.au)