



## **Annual Super Tuesday bike count, 2010: Tuesday 2 March, 7 – 9 am**

### **Initial data: Randwick City Council**

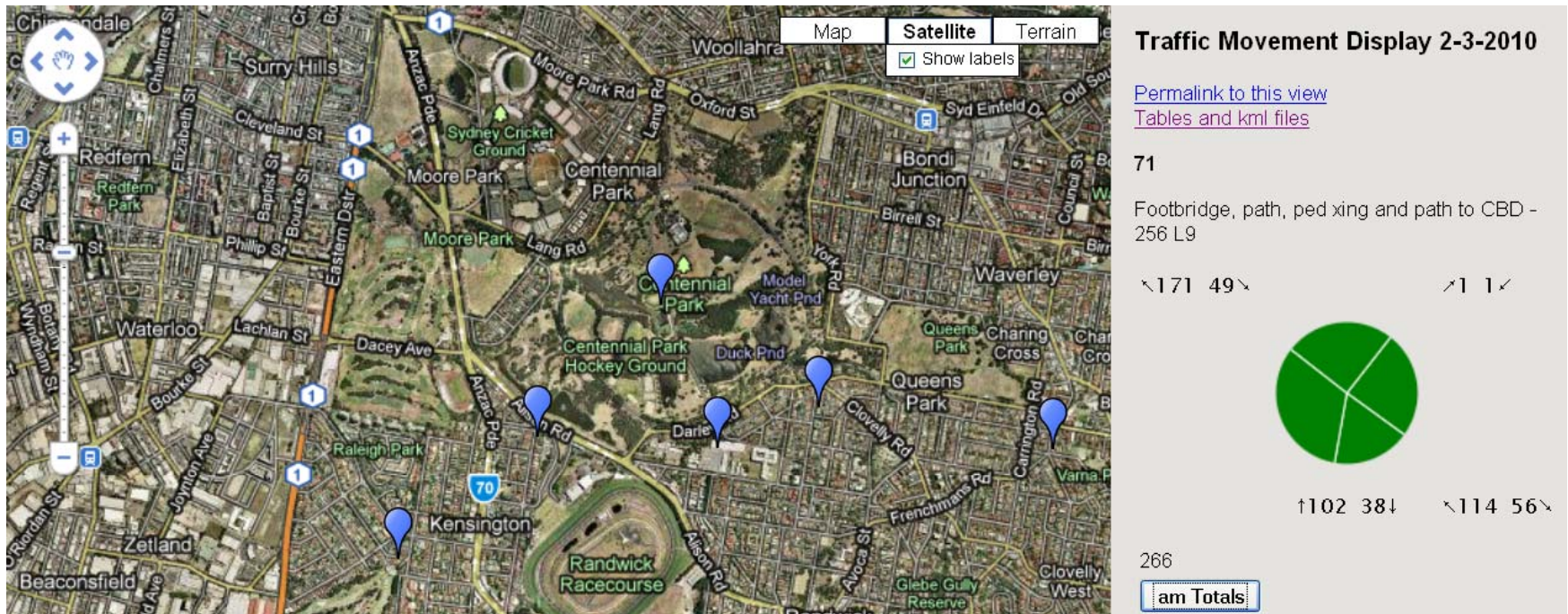
*The data in the following table shows data collected in the annual Super Tuesday bike count. The table includes data received by the Bicycle Network as at 17 March 2010. 'Total rider numbers' indicates the total number of riders through each intersection in the 7 – 9am period. Turning movements will be provided in full in the final report.*

*The graphical images are screen captures that give an indication of the format of some of the data presentation in the final Super Tuesday reports that each council will receive.*

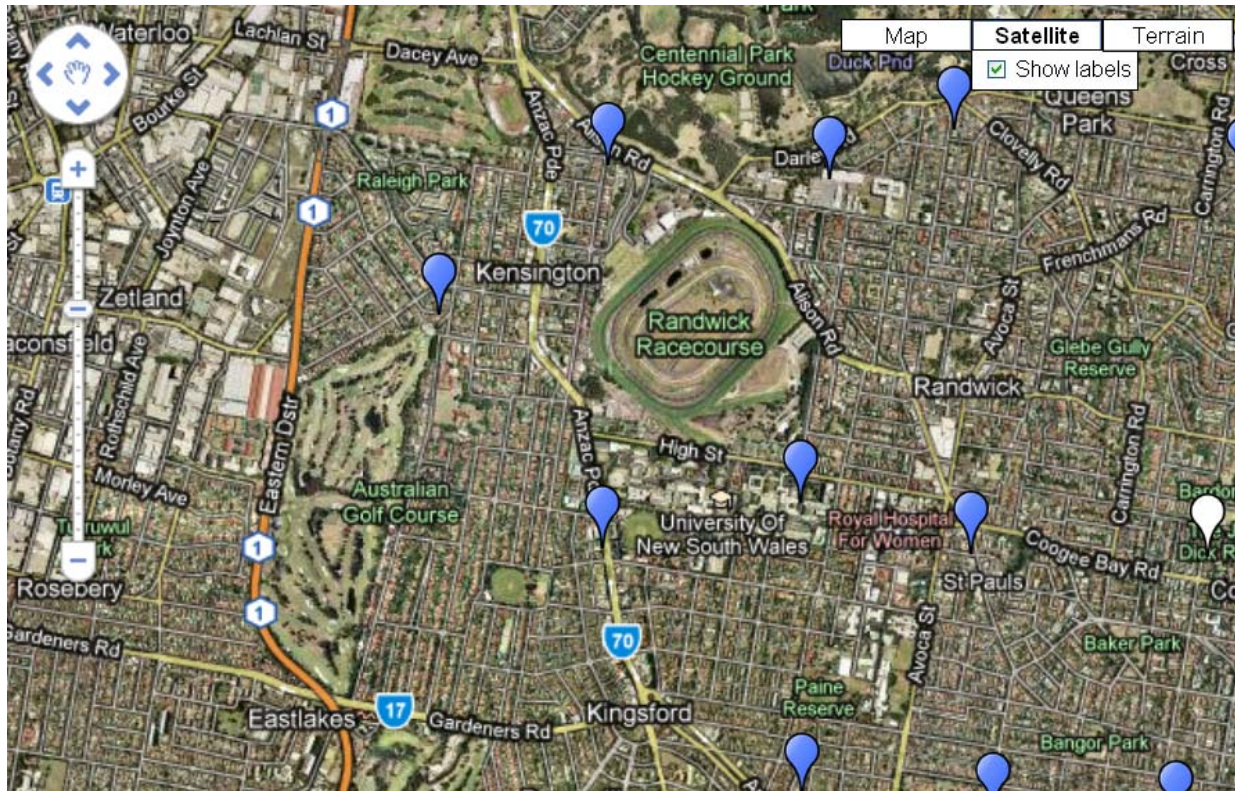
*Please note that the data provided here is raw data and the verification process is not yet complete and so there maybe a small % of sites for which data is not available.*

<b>Council</b>	<b>Location</b>	<b>Map ref</b>	<b>Site</b>	<b>Total Number of Riders</b>
Randwick	Footbridge, path, ped xing and path to CBD	256 L9	71	266
Randwick	ANZAC Pde, Day Ave and ANZAC Pde	256 L15	79	125
Randwick	Wansey Rd, High St and High St	256 P14	77	121
Randwick	Darley Rd & path, Govett St, Darley Rd & path and path to Parkes Drv - count on and off rd as one	256 Q10	72	109
Randwick	Albion St, Macpherson St, Fern St and Macpherson St	257 F9	73	88
Randwick	Darley Rd, Clovelly St, Wentworth St and Darley Rd	257 B8	70	82
Randwick	Todman Ave, Lenthall St and Brompton Rd	256 H11	75	72
Randwick	Bunnerong Rd, ANZAC Pde and Canara Ave	296 Q12	92	55
Randwick	Malabar Rd, Bundock St and Malabar Rd	277 E3	84	41
Randwick	Dickens Drv, Parkes Drv and path to racecourse, Dickens Drv and Parkes Drv and path to Oxford St	16 M12	69	36
Randwick	Bunnerong Rd, Beauchamp Rd, Bunnerong Rd and Beauchamp Rd	276 N16	89	13
Randwick	Mons Ave (towards beach), Malabar Rd, Mons Ave and Malabar Rd	277 F12	87	10
Randwick	Bunnerong Rd, Botany Rd and Botany Rd	296 N5	91	10
Randwick	Byrd Ave, Sturt St, Byrd Ave and Sturt St	276 P3	82	8
Randwick	Garden St, Haig St and Haig St	277 B10	86	6

## Site 71 – Rider numbers and movements



**Site 79 – Rider numbers and movements**

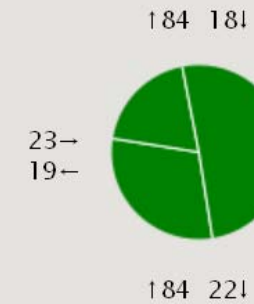


**Traffic Movement Display  
2-3-2010**

[Permalink to this view](#)  
[Tables and kml files](#)

79

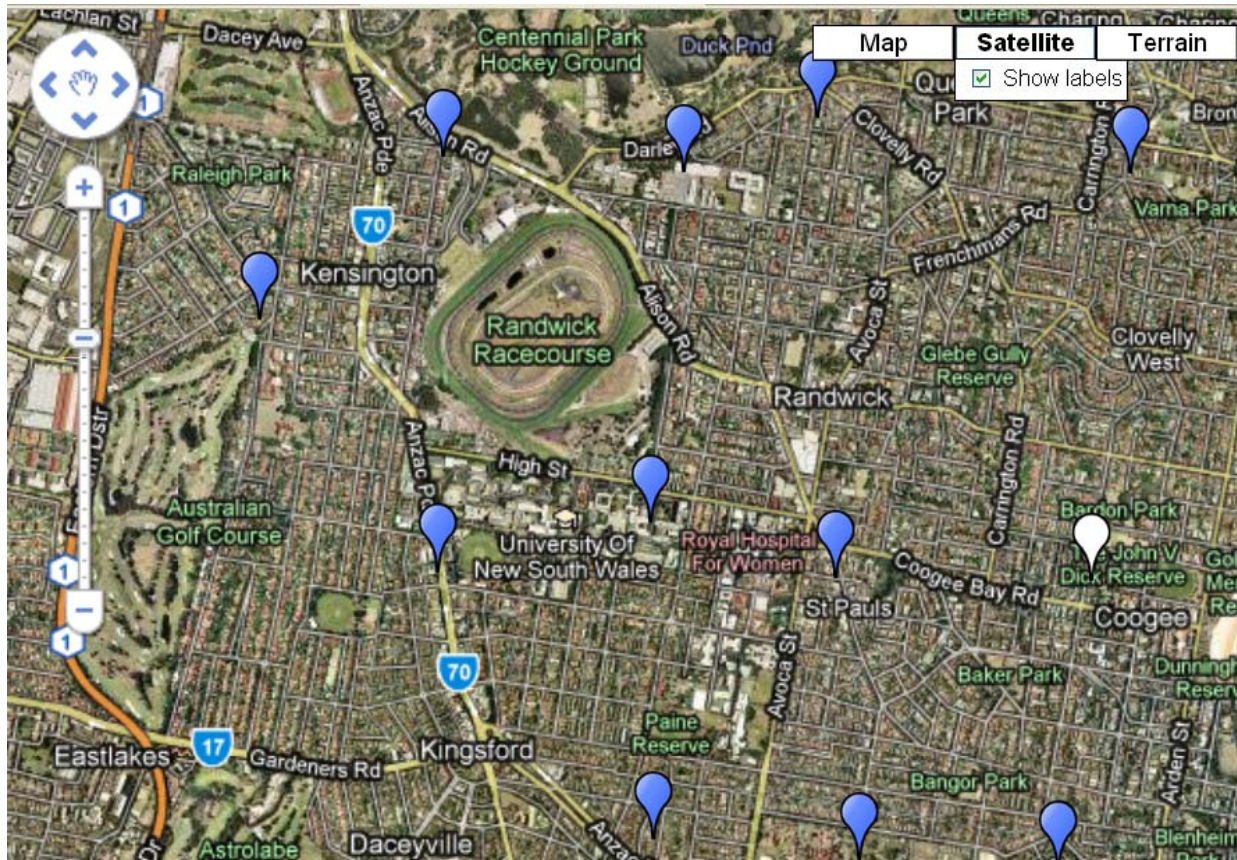
ANZAC Pde, Day Ave and ANZAC Pde -  
256 L15



125

am Totals

**Site 77 – Rider numbers and movements**

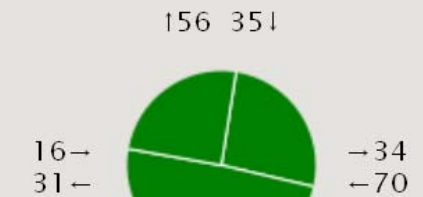


**Traffic Movement Display  
2-3-2010**

[Permalink to this view](#)  
[Tables and kml files](#)

77

Wansey Rd, High St and High St - 256  
P14



121

am Totals