



Annual Super Tuesday bike count, 2010: Tuesday 2 March, 7 – 9 am

Initial data: City of Perth

The data in the following table shows data collected in the annual Super Tuesday bike count. The table includes data received by the Bicycle Network as at 17 March 2010. 'Total rider numbers' indicates the total number of riders through each intersection in the 7 – 9am period. Turning movements will be provided in full in the final report.

The graphical images are screen captures that give an indication of the format of some of the data presentation in the final Super Tuesday reports that each council will receive.

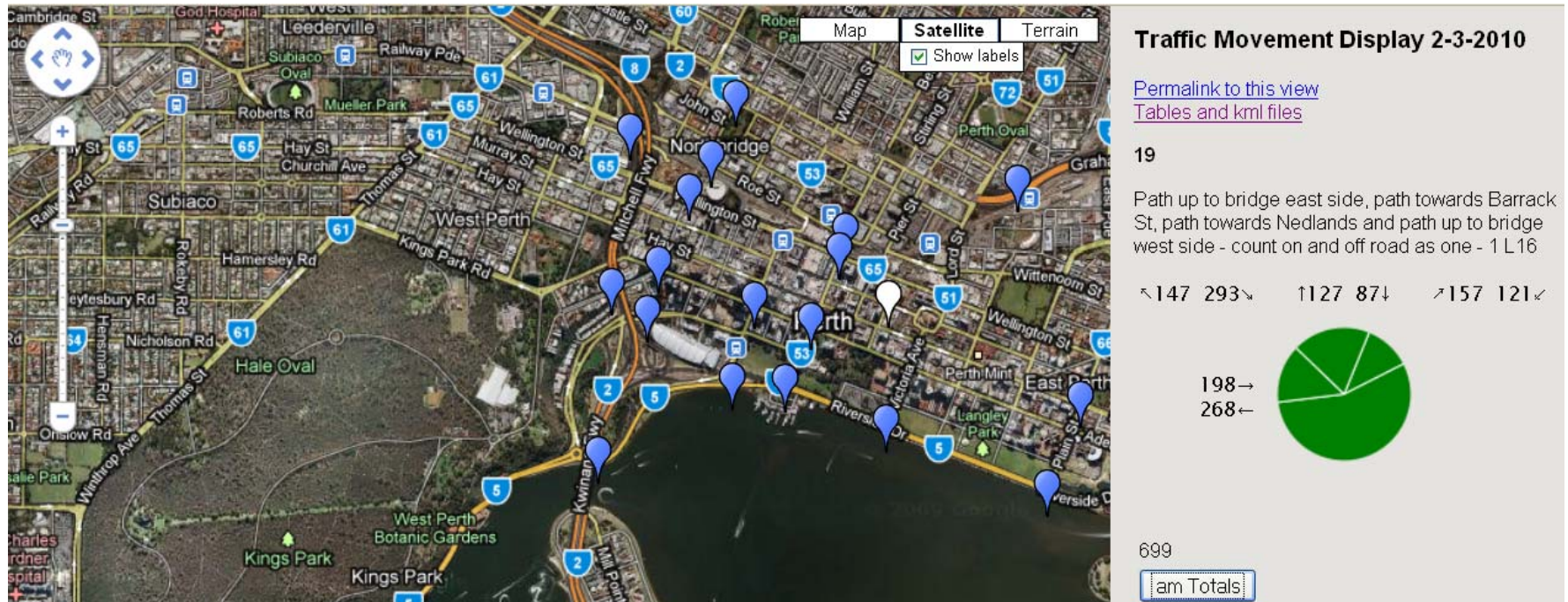
Please note that the data provided here is raw data and the verification process is not yet complete and so there maybe a small % of sites for which data is not available.

Council	Location	Map ref	Site	Total Riders
Perth	Path up to bridge east side, path towards Barrack St, path towards Nedlands and path up to bridge west side - count on and off road as one	1 L16	19	699
Perth	Entrance to footbridge to Roe St dogleg, Wellington St ped xing, Milligan St dogleg and Wellington St ped xing	A L5	5	628
Perth	Footbridge to Mount St east, path to towards river, Mount St west and path towards Parliament House	A F11	10	562
Perth	William St, Riverside Drv cycleway towards Barrack St and Riverside Drv cycleway towards hwy bridge	A M17	15	523
Perth	Market St cycleway to Wellington St at Milligan St, path to Wellington St at George St and Market St cycleway to station	A G4	1	509
Perth	Beaufort St, Bridge Rd, Beaufort St and Roe St	2 F7	7	470
Perth	Barrack St, Riverside Drv cycleway towards Victoria Ave and Riverside Drv cycleway towards hwy bridge - count on and off road as one	B B17	16	467
Perth	Claisebrook Rd cycleway towards Caversham St, footbridge by Edward St and Claisebrook Rd cycleway to Lord St	2 P4	4	457
Perth	Victoria Ave, Riverside Drv cycleway towards Plain St and Riverside Drv cycleway towards hwy bridge - count on and off road as one	2 G15	18	448
Perth	Milligan St, St Georges Tce, Mount St and St Georges Tce	A J10	9	411
Perth	Path that loops around under bridge, path across bridge, path to Plain St along Riverside Drv - count on and off road as one	7 E1	20	404
Perth	Roe St, footbridge to Milligan St and Roe St	A M3	3	402
Perth	Plain St, Riverside Drv cycleway towards Causeway and Riverside Drv cycleway towards Barrack St - count on and off road as one	6 Q1	21	371
Perth	Path down to Swan River, path under bridge to Victory Tce and path to hwy interchange	3 E3	2	331
Perth	Barrack St, Wellington St, Barrack St and Wellington St	2 F7	8	287
Perth	Aberdeen St, Shenton St and Aberdeen St	2 A1	0	278
Perth	St Georges Tce, William St, St Georges Tce and William St	2 B10	12	229
Perth	Path to Spring St, Mounts Bay Rd cycleway, path to Swan River via hwy entry/exit and Mounts Bay Rd cycleway under hwy	A H13	13	153

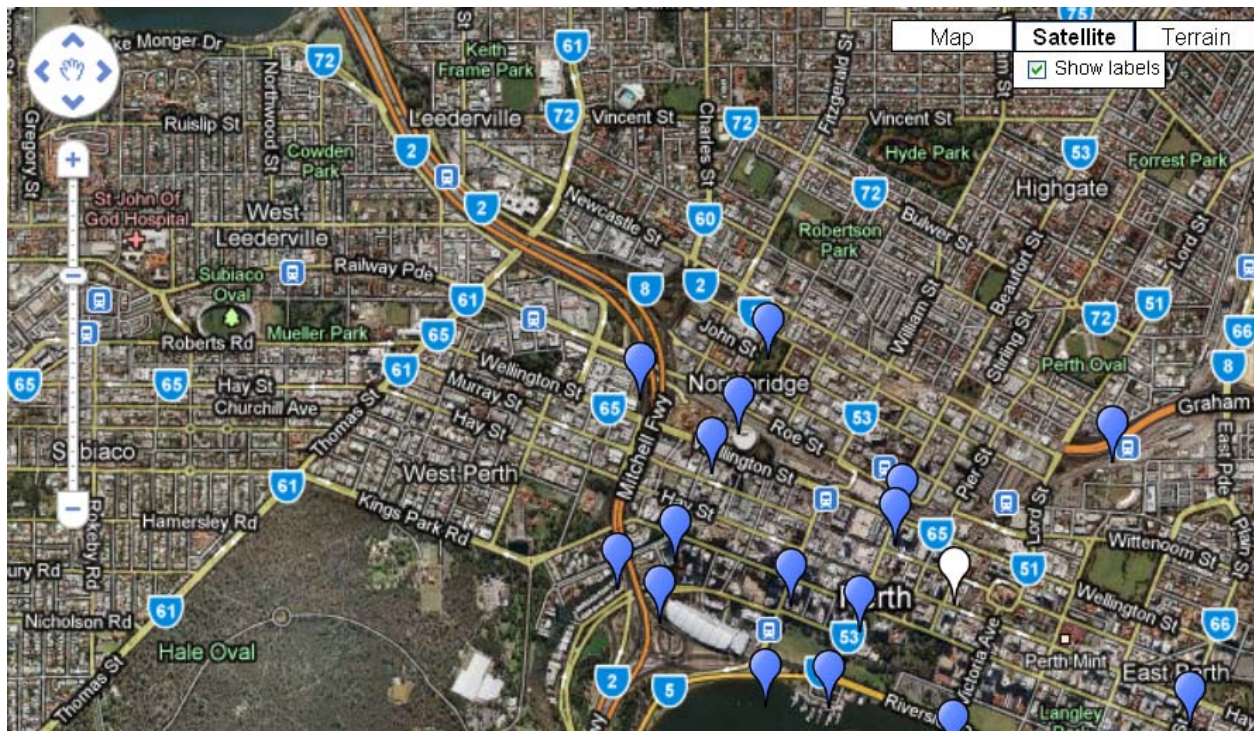


Perth	St Georges Tce, Barrack St, St Georges Tce and Barrack St	2 D10	14	149
Perth	Trafalgar Rd, Brown St, Claisebrook Cove footbridge, Henry Lawson Rd via Trafalgar Rd and Brown St	3 E7	6	147
Perth	Hay St, Plain St, Hay St and Plain St	3 A14	17	53

Site 19 – Rider numbers and movements



Site 5 – Rider numbers and movements

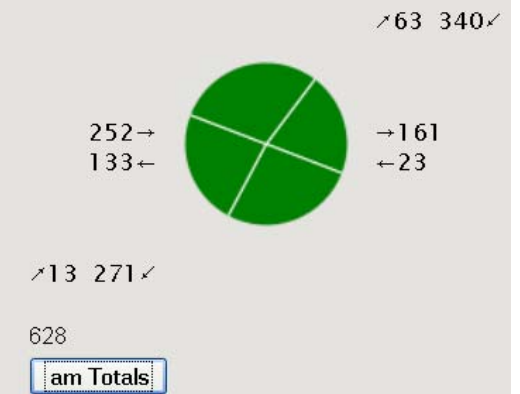


Traffic Movement Display 2-3-2010

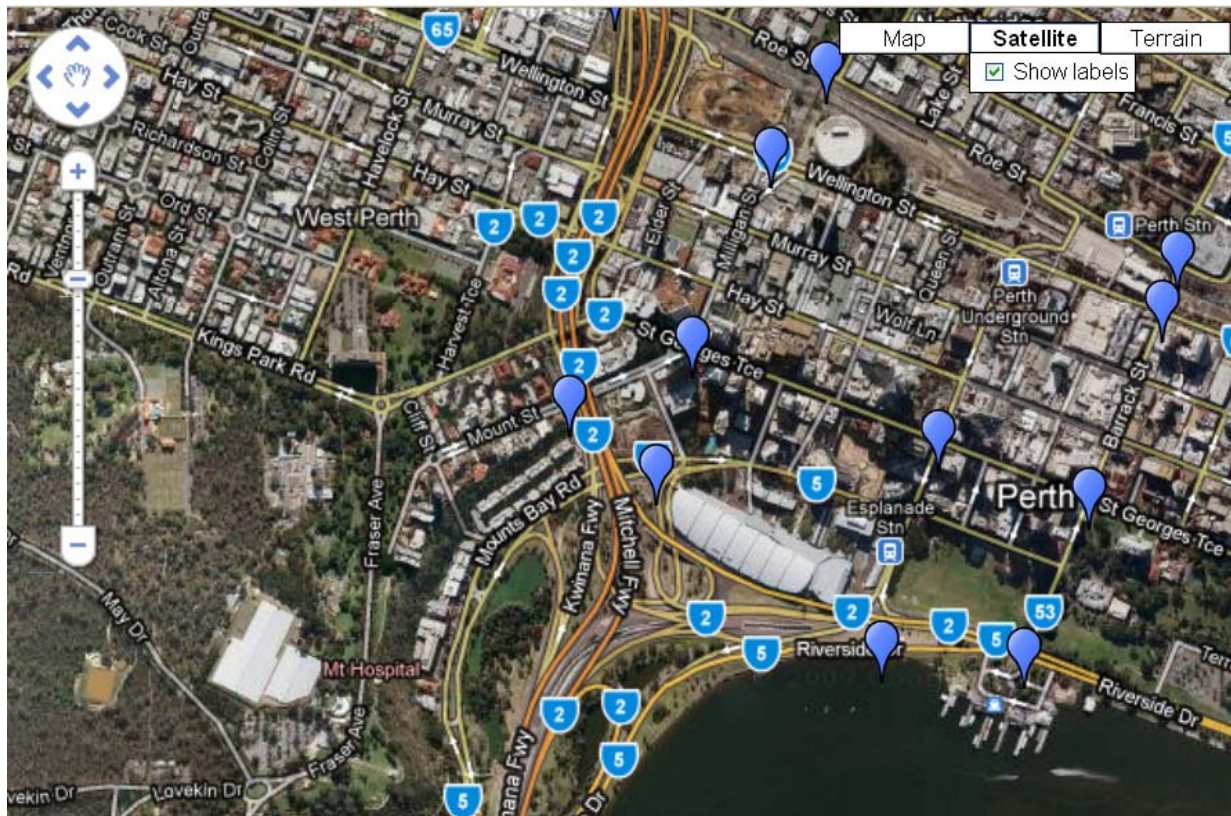
[Permalink to this view](#)
[Tables and kml files](#)

5

Entrance to footbridge to Roe St dogleg,
Wellington St ped xing, Milligan St dogleg and
Wellington St ped xing - A L5



Site 10 – Rider numbers and movements



**Traffic Movement Display
2-3-2010**

[Permalink to this view](#)
[Tables and kml files](#)

10

Footbridge to Mount St east, path to towards river, Mount St west and path towards Parliament House - A F11

1188 131 /100 411/

100—
242—



138 321

562

am Totals