



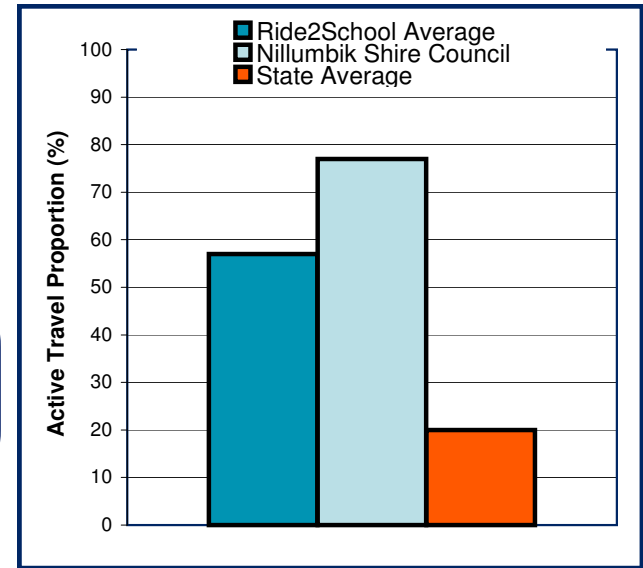
# National Ride2School Day 2010 Report

## Nillumbik Shire Council

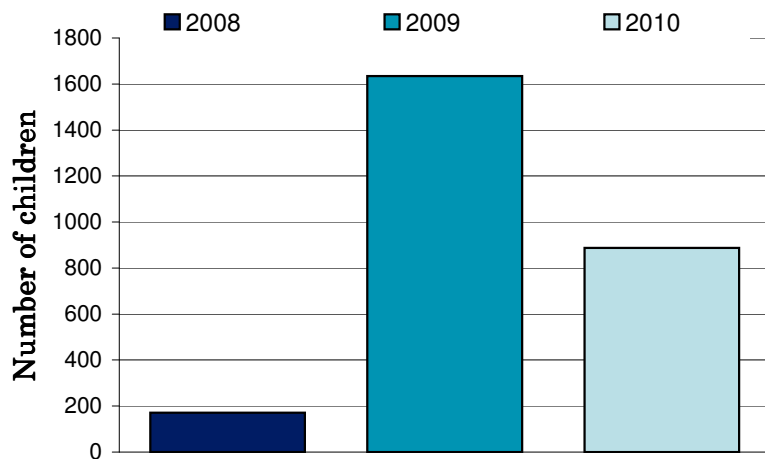
Dear Mayor, Councillors and supporters of Ride2School, Ride2School is proud to bring you all the figures on the 2010 National Ride2School Day in your municipality. This years National Ride2School Day was our biggest and best yet!

Any involvement your council may have had to support the day is much appreciated by all involved and gets more students riding more often!

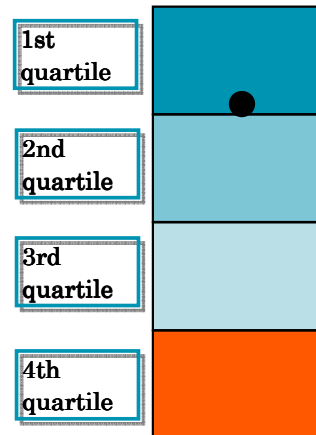
The graph on the right shows the Ride2School, your council's and the state-wide average active travel rate



**Active travel numbers (based on Hands Up! data)**



The black dot in the right diagram marks your relative position in comparison to other Victorian councils. Ideally, you want to be in the first quartile.



The registered school rank shows how many schools are registered in your council versus other councils. The active travel rank does the same, only for active travel percentage.

**Registered school rank**  
**33**  
**(out of 80 councils)**

**Active travel rank**  
**9**  
**(out of 80 councils)**

# Nillumbik Shire Council

Schools currently registered with Ride2School	National Ride2School Day Active Travel %age		
	2008	2009	2010
Greenhills Primary School			
Briar Hill Primary School			
Sherbourne Primary School		79	100
Diamond Valley Special Developmental School			
Diamond Valley College			
Yarrambat Primary School			
Eltham Primary School			62
Eltham College		100	
Eltham East Primary School	35	46	78
Our Lady Help Of Christians Primary (Eltham Vic0			
Catholic Ladies' College			
Strathewen Primary School			
Christmas Hills Primary School			
Kangaroo Ground Primary School			



**Carbon Savings**  
**5.26**  
**tonnes of greenhouse**  
**gas emissions**

**105166**  
**black balloons**

## Top 5 Local Councils

(Based on the number of schools reporting)

1. Greater Geelong City Council
2. Mornington Peninsula Shire Council
3. Yarra Ranges Shire Council
4. Boroondara City Council
5. Wyndham City Council

## Council Active Schools Challenge

The Active Schools Challenge is an opportunity for schools who are already kicking some active travel goals or are hoping to increase their active travel rate to be rewarded for their efforts.

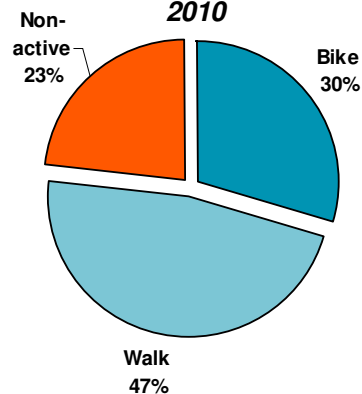
We know that council support assists in increasing active travel rates, so we have set you a challenge! The council that has the most schools complete the challenge compared to the total number of schools in the municipality will be rewarded the 2010

Ride2School Most Active Council Award. For more information visit

<http://www.bv.com.au/ride2school/91212/>

## National Ride2School Day

2010



Ride2School

Ph: 03 8636 8888

E: [ride2school@bv.com.au](mailto:ride2school@bv.com.au)

W: [www.ride2school.com.au](http://www.ride2school.com.au)

