

DETOUR MAP 2

TEMPORARY DIVERSION - BELLARINE RAIL TRAIL (WILSONS RD – BOUNDARY RD)

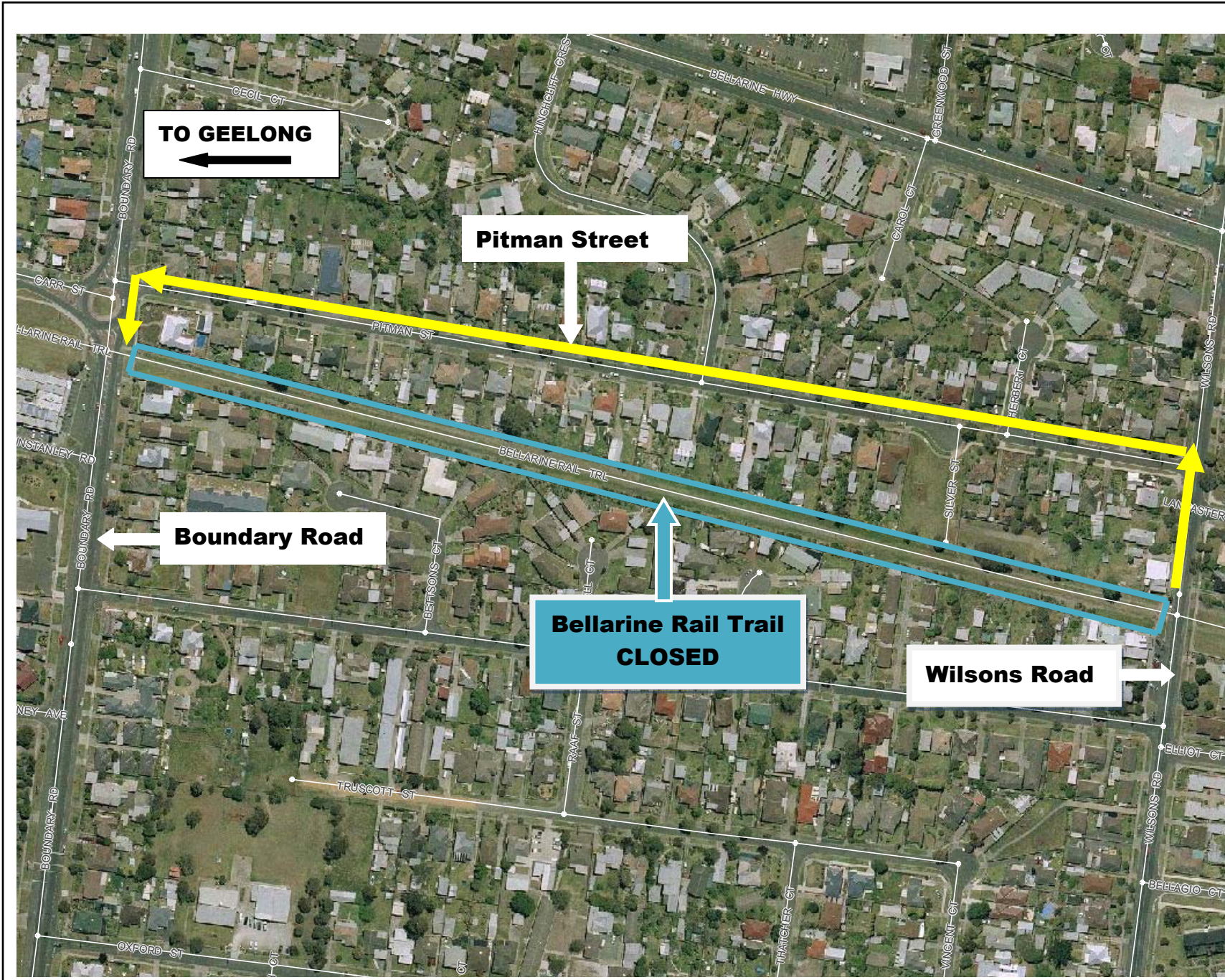


PROJECT:
LEOPOLD RISING MAIN NO.1
DATE: 12/04/10
REV A

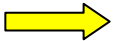

155 Mercer St
Geelong VIC 3220
Ph: 1300 656 007
www.barwonwater.vic.gov.au



MGA55



LEGEND

-  DETOUR ROUTE
-  BELLARINE RAIL TRAIL