



Annual Super Tuesday bike count, 2010: Tuesday 2 March, 7 – 9 am

Initial data: Hobsons Bay City Council

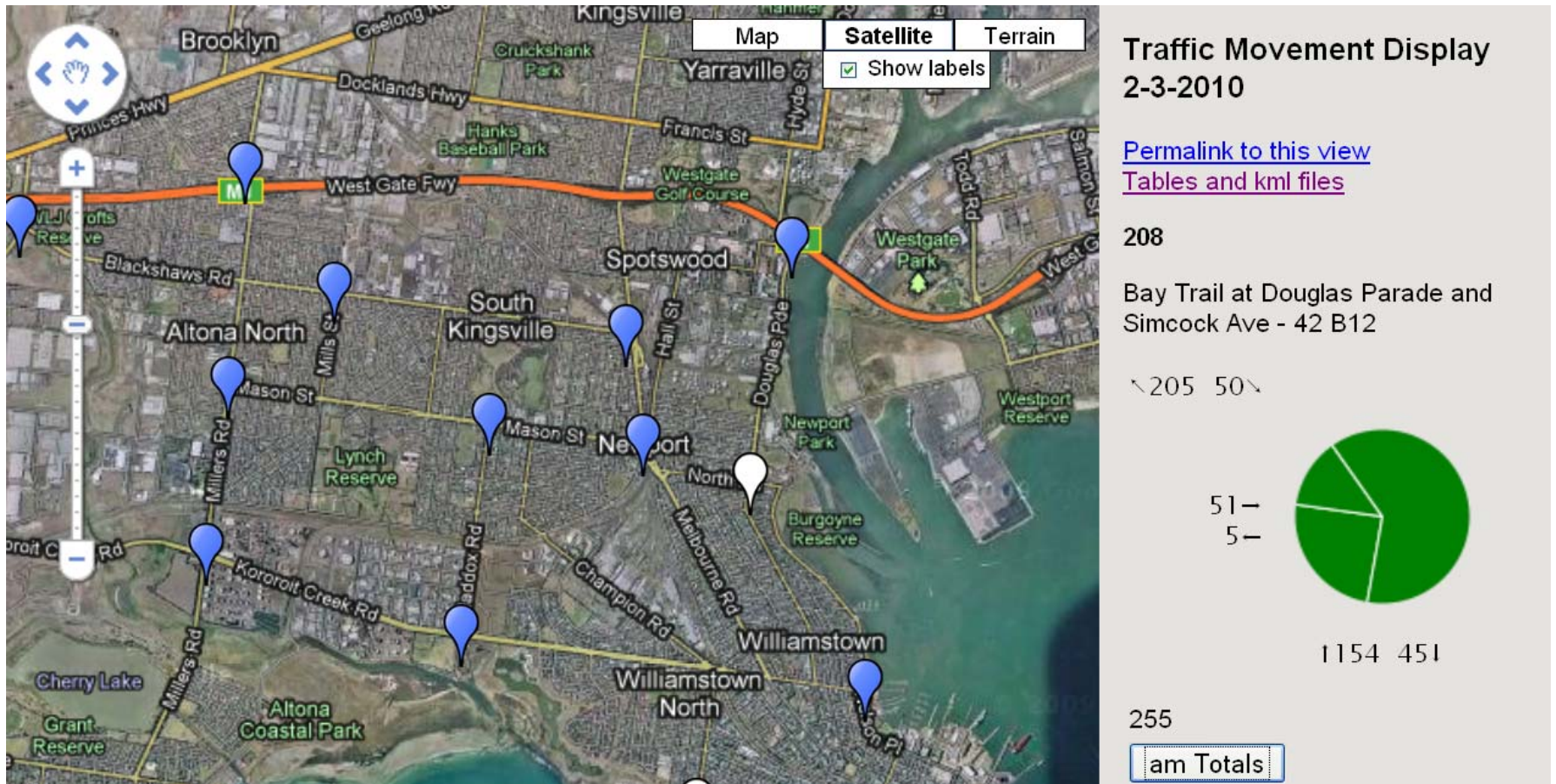
The data in the following table shows data collected in the annual Super Tuesday bike count. The table includes data received by the Bicycle Network as at 17 March 2010. 'Total rider numbers' indicates the total number of riders through each intersection in the 7 – 9am period. Turning movements will be provided in full in the final report.

The graphical images are screen captures that give an indication of the format of some of the data presentation in the final Super Tuesday reports that each council will receive.

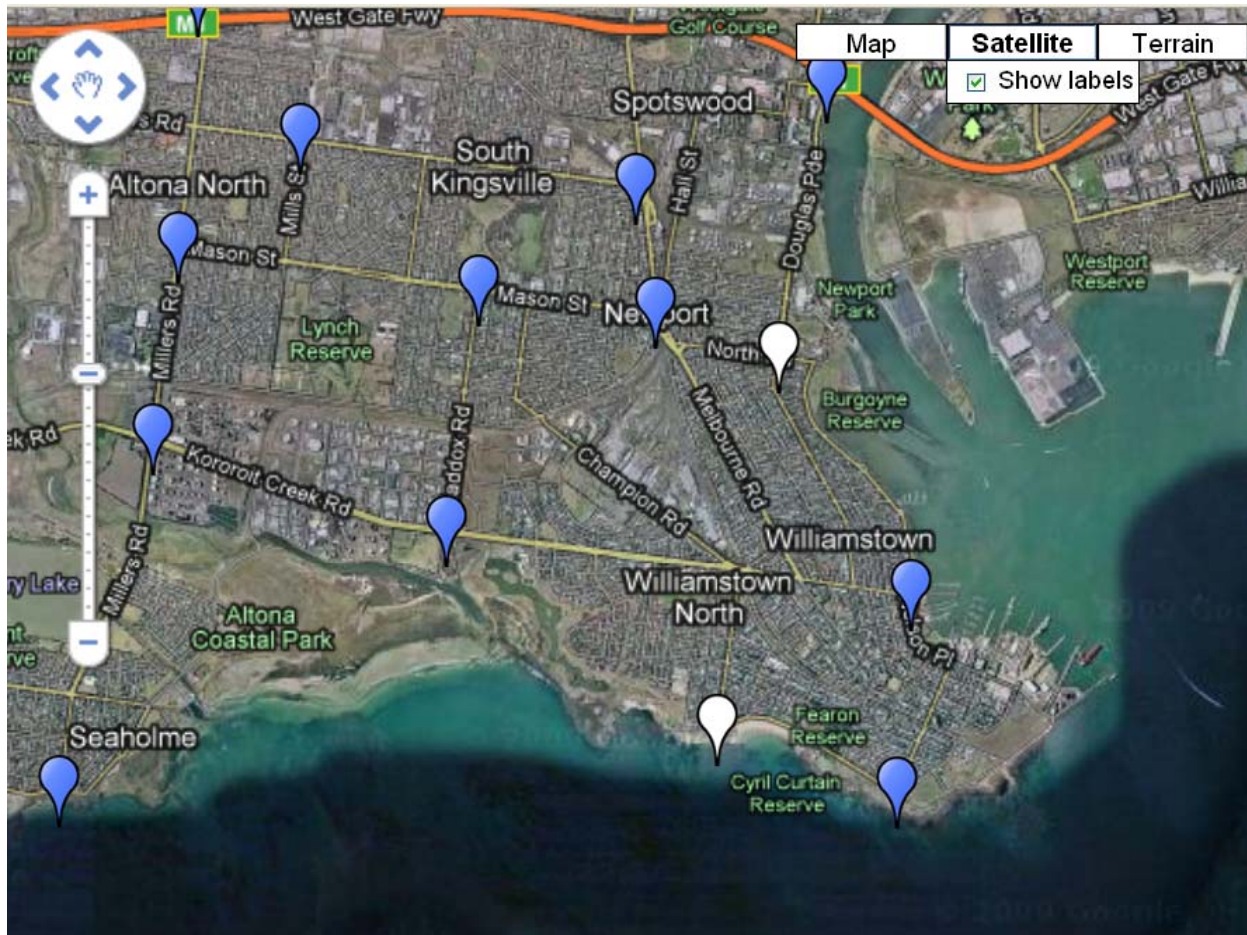
Please note that the data provided here is raw data and the verification process is not yet complete and so there maybe a small % of sites for which data is not available.

Council	Location	Map ref	Site	Total Number of Riders
Hobsons Bay	Bay Trail at Douglas Parade and Simcock Ave	42 B12	208	255
Hobsons Bay	The Strand & Bay Trail, Ferguson St and The Strand & Bay Trail towards CBD- on rd and off rd as one	56 D8	219	126
Hobsons Bay	Millers Rd, Esplanade and Esplanade	54 J11	222	71
Hobsons Bay	Thompson St, Morris St, Bay trail next to Tennis court and Esplanade	56 D12	223	65
Hobsons Bay	Maddox Rd, Kororoit Crk Rd, Maddox Rd and Kororoit Crk Rd - stand on south side - include path 50m from south side as equiv to roads	55 F7	218	62
Hobsons Bay	Leslie St, Mason St, Maddox Rd and Mason St	55 G3	212	61
Hobsons Bay	Point Cook Rd, Skeleton Creek Trail, Point Cook Rd and Skeleton Creek Trail - south side of creek	53 B12	226	49
Hobsons Bay	Queen St, Maidstone St, Queen St and Maidstone St	54 D12	225	44
Hobsons Bay	Millers Rd, Kororoit Creek Rd, Millers Rd and Kororoit Creek Rd	55 A6	217	39
Hobsons Bay	Laverton Creek Trail, Queen St, Laverton Creek Trail and Queen St - west side of creek where trail crosses Queen St	209 A1	227	36
Hobsons Bay	Melbourne Rd, path to station, Melbourne Rd and Mason St	55 K4	213	34
Hobsons Bay	Millers Rd, Millers Rd and Federation Trail	41 B11	206	30
Hobsons Bay	Path to Altona, path to footbridge - Sanctuary Lakes and path that goes upstream - Skeleton Creek	208 G6	228	30
Hobsons Bay	Millers Rd, Mason St and Millers Rd	55 A3	211	26
Hobsons Bay	Kyle Rd, Blackshaws Rd, Mills St and Blackshaws Rd	55 D1	209	21
Hobsons Bay	Laverton Station: Railway Ave, Fitzroy St, Railway Ave and the footbridge	53 E10	220	21
Hobsons Bay	Merton St, Queen St, Merton St and Central Ave	53 F12	224	18
Hobsons Bay	Blackshaws Rd, Schutt St and Blackshaws Rd	55 J2	210	16
Hobsons Bay	Grieve Pde, Kororoit Creek Rd and Kororoit Creek Rd	54 F5	216	10
Hobsons Bay	Grieve Pde, Blackshaws Rd and Grieve Pde	40 G12	207	9
Hobsons Bay	Kororoit Creek Rd. Burns Rd and Kororoit Creek Rd	53 J5	214	6

Site 208 – Rider numbers and movements



Site 219 – Rider numbers and movements

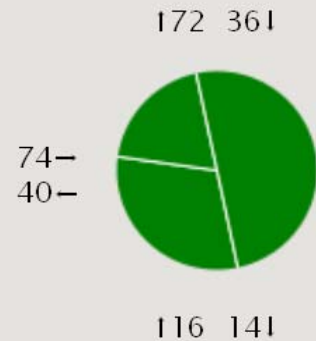


**Traffic Movement Display
2-3-2010**

[Permalink to this view](#)
[Tables and kml files](#)

219

The Strand & Bay Trail, Ferguson St and The Strand & Bay Trail towards CBD- on rd and off rd as one - 56 D8



126

am Totals

Site 222 – Rider numbers and movements

