

Community Bulletin

Geotechnical Investigations at Dights Falls Weir

The Waterways Alliance on behalf of Melbourne Water will shortly be undertaking Geotechnical Investigations at Dights Falls Weir in Abbotsford.

Earlier studies found that the heritage listed weir is structurally unsafe and needs to be replaced, along with improving the fish way to encourage fish migration upstream.

In order to complete the design of the new weir and fish way a comprehensive survey of the Dights Falls area needs to be completed including geological investigations on both land and in the river itself.

What will we be doing?

Investigations will be conducted both up and downstream. A total of seven bore holes and two test pits are to be completed, including two on land.

You might notice drilling and excavation works. Upstream drilling of the Weir will be conducted from a barge and works downstream will be accessed via a temporary ramp.

During the investigations some areas may be restricted for public access. For your safety please observe all site signage.

When will this be happening?

Works will begin in mid November and are schedule to be completed prior to Christmas. However, if further testing is required investigation works may continue through to early 2010.

Generally working hours will be between 7am and 6pm, Monday to Friday; however some out of hour's works may be required. Some weekend work may be required.

Will park users be impacted?

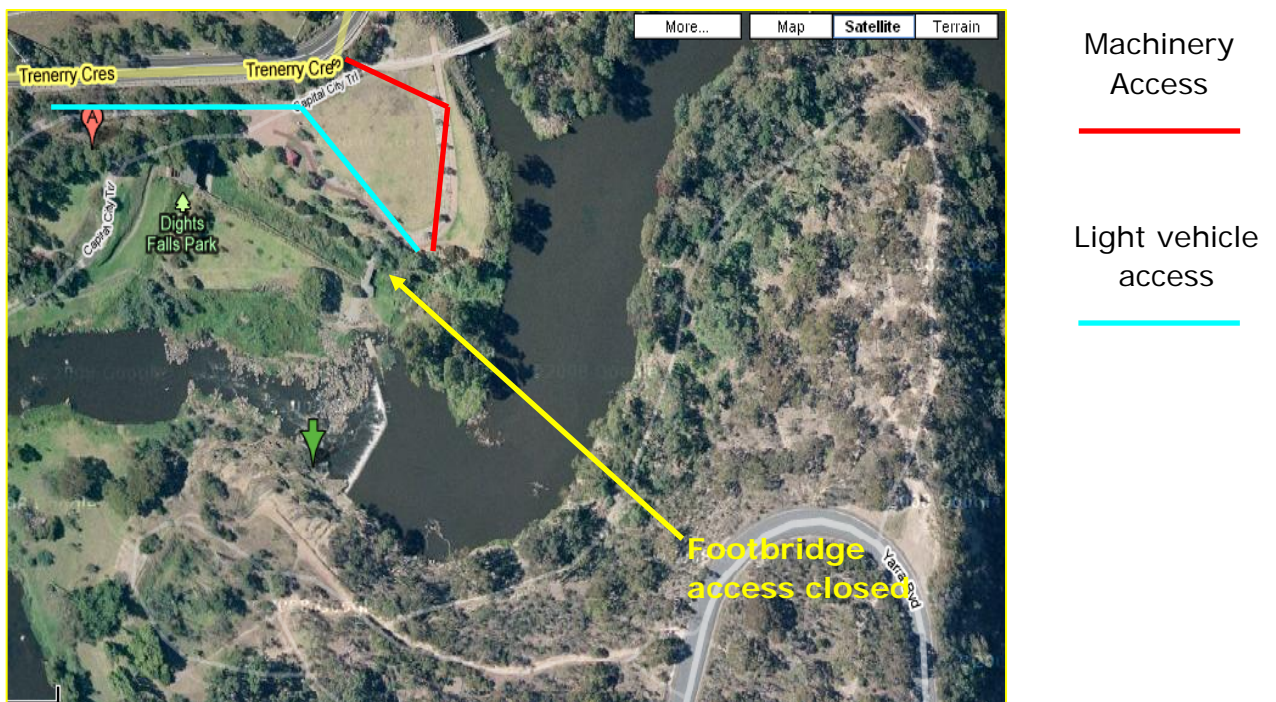
From time to time trucks will need to access the site to bring machinery to the river's edge, via Trenerry Crescent. Traffic

management procedures will be implemented whilst this is occurring. Every effort will be made to limit site traffic.

The weir access pedestrian bridge will be closed for the duration of works.

Light vehicles will also be using the bike track from Dights Falls car park down to the park. Please be mindful when using this track.

Temporary signage will be used to inform park users of changes during the works.



Next Steps

These investigations are necessary for the future health of the river and to assist in the protection of the site. The City of Yarra, Heritage Victoria and the Wurundjeri have been consulted about the investigations.

Once the investigations are complete the Waterways Alliance and Melbourne Water will work with the community on construction plans for the site.

Call Erin Furmanczyk on 8417 7763 for information about this project. Or call Melbourne Water on 131 722 or visit melbournewater.com.au for general information about other projects to secure a sustainable water future.